

# GRID DISPLAY



□ GRID □



## **The GRID. All you need.**

Welcome to GRID. Created by Peter J. Lassen as a cube with unprecedented organisational flexibility. Private or public, artistic or commercial.

*GRID is the best choice in many contexts. It's the epitome of simplicity and flexibility and offers you endless variations - for your shop, museum, exhibition, special launch or event. A GRID is more than meets the eye. It's what you want it to be. Enjoy GRID."*

# GRID

## What can GRID do for you?

As an interior system GRID offers endless opportunities. Used as a wall system, display, podium, room divider, frame, seating or to present your latest creation in the most flattering fashion?

You can create whatever you need, with one GRID - or hundreds. Open or closed. Black or white. GRID challenges your creative thinking, and first and last impressions of the system are equally elegant. Just like Peter J. Lassen wanted them to be. Welcome to a world of flexible solutions. Welcome to GRID.





# LAKRIDS

The story of Lakrids is a story of tradition and craftsmanship. It all began in 1860 when Johan Bülow, a Danish confectioner, discovered the art of making liquorice sticks on the island of Bornholm. Over the years, the recipe has been passed down through generations, and today, Lakrids is a beloved treat in Denmark and around the world. Our products are made with the highest quality ingredients and are produced in a state-of-the-art facility. We are proud to offer a wide variety of flavors and packaging options to suit every taste. Visit our website at [www.lakrids.com](http://www.lakrids.com) for more information.

**LAKRIDS**  
Back to the roots.  
When it comes to liquorice sticks from Lakrids by Johan Bülow, we go back to our roots on the island of Bornholm where it all began.

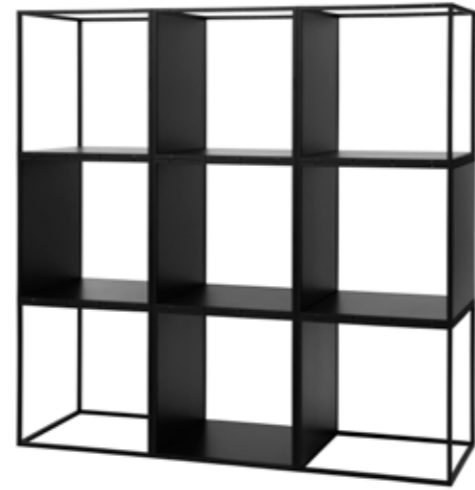




# GRID

**GRID**



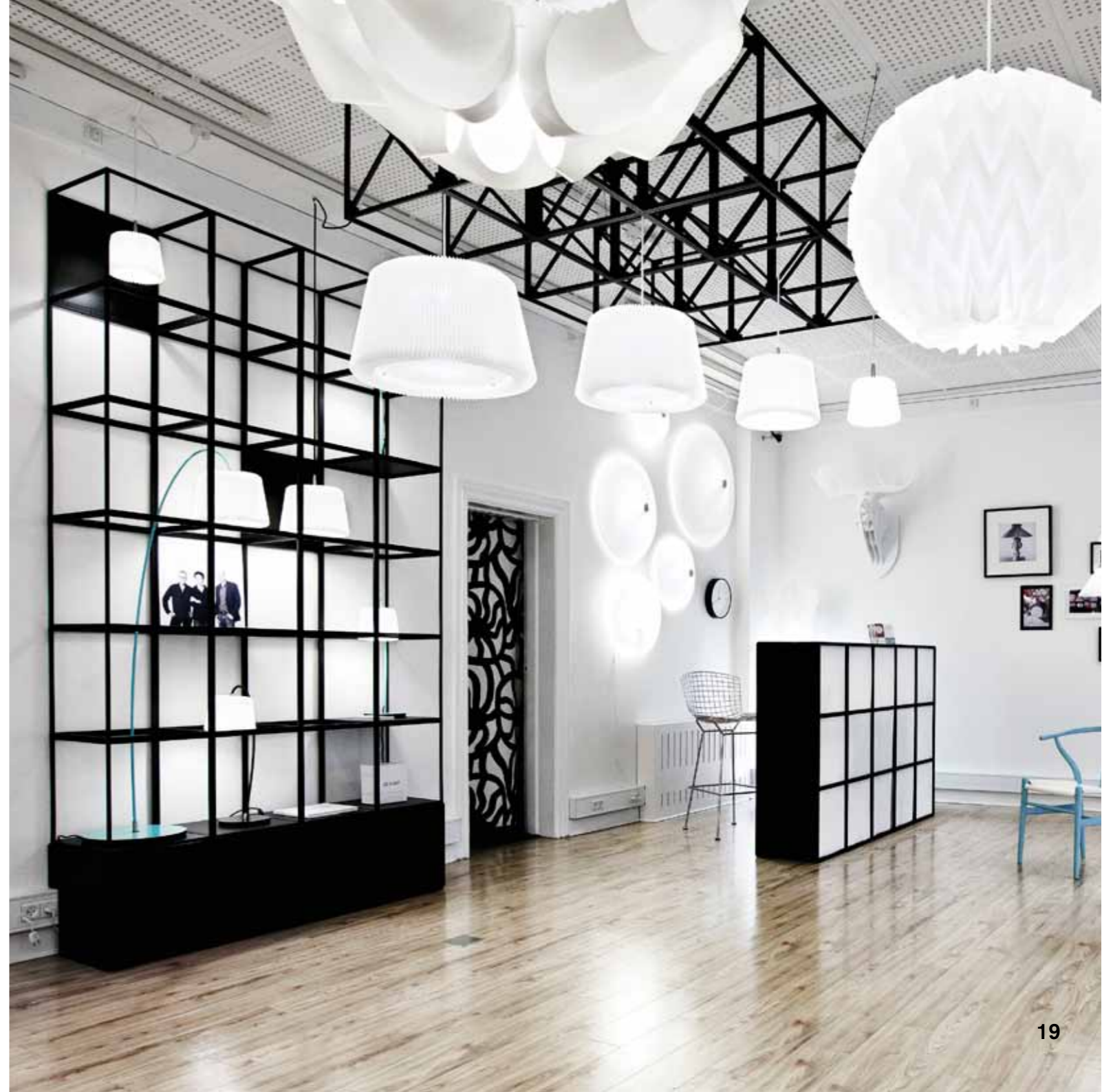








# GRID











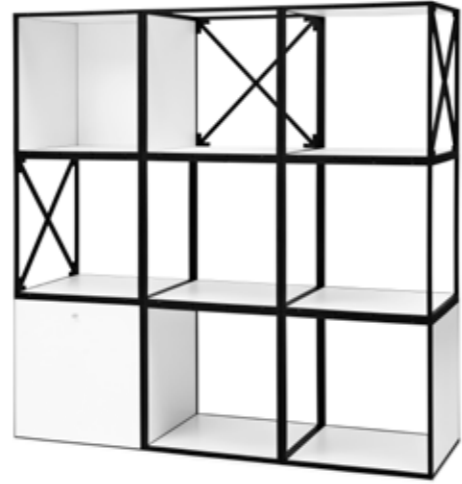










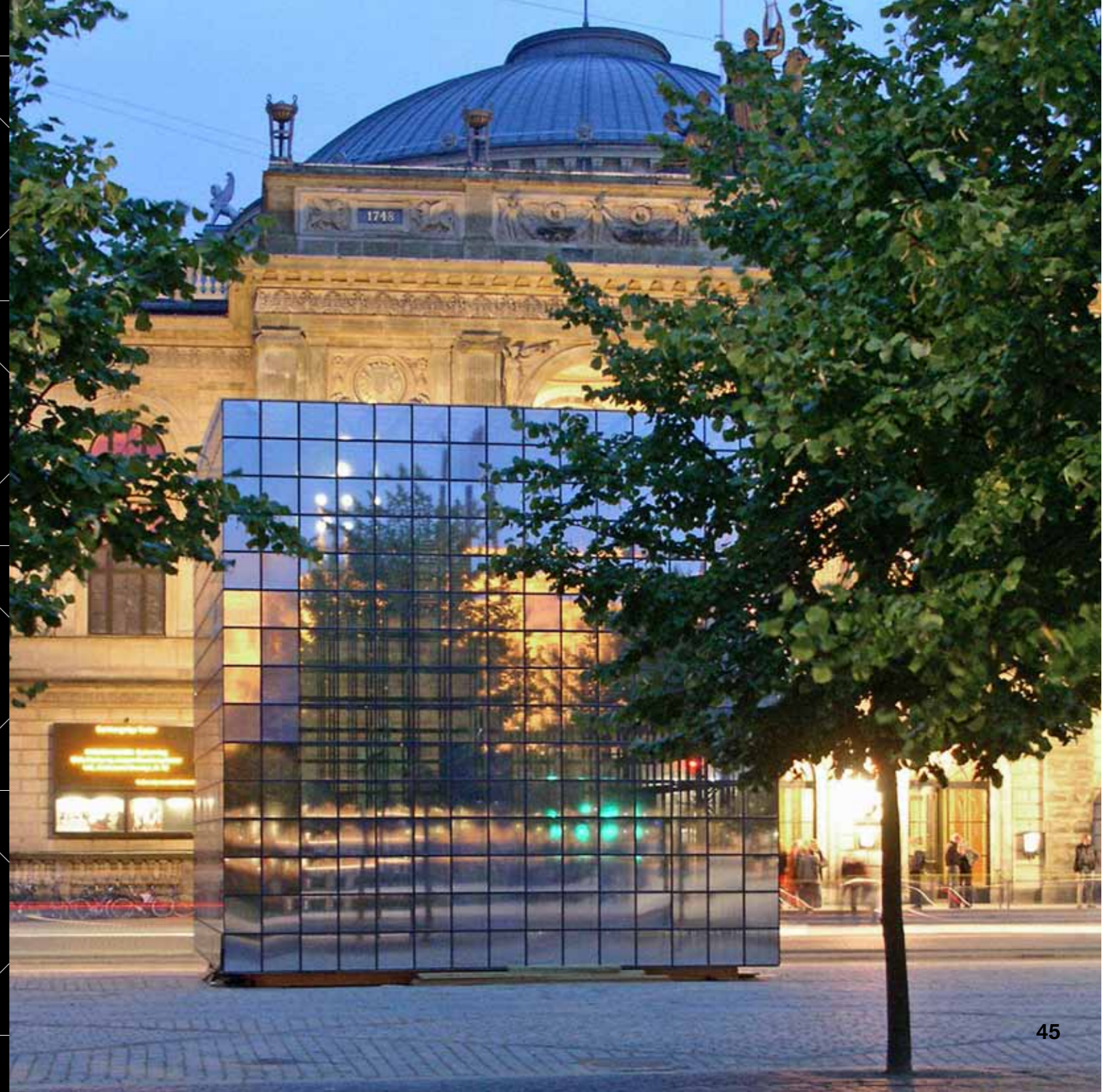


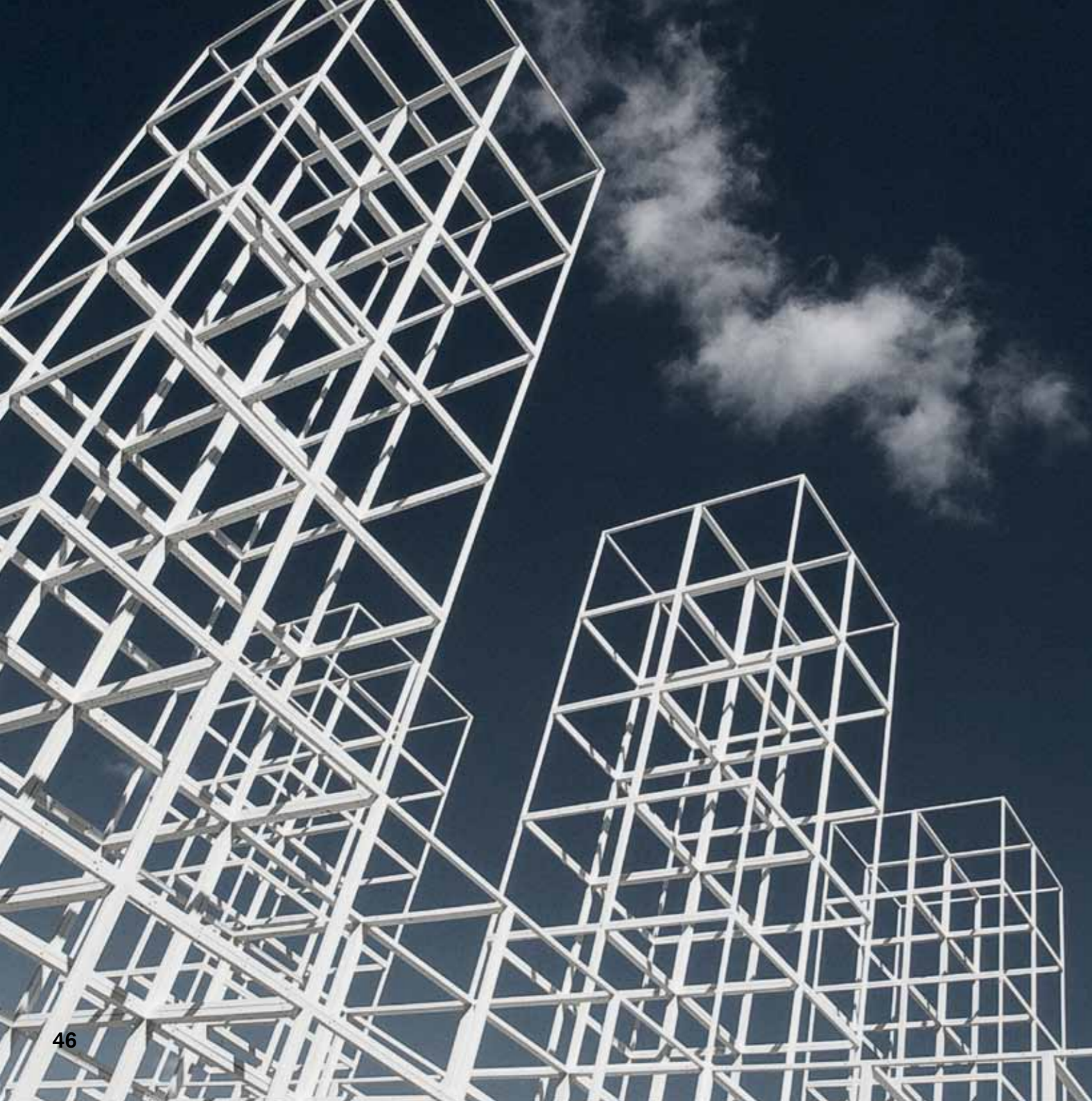


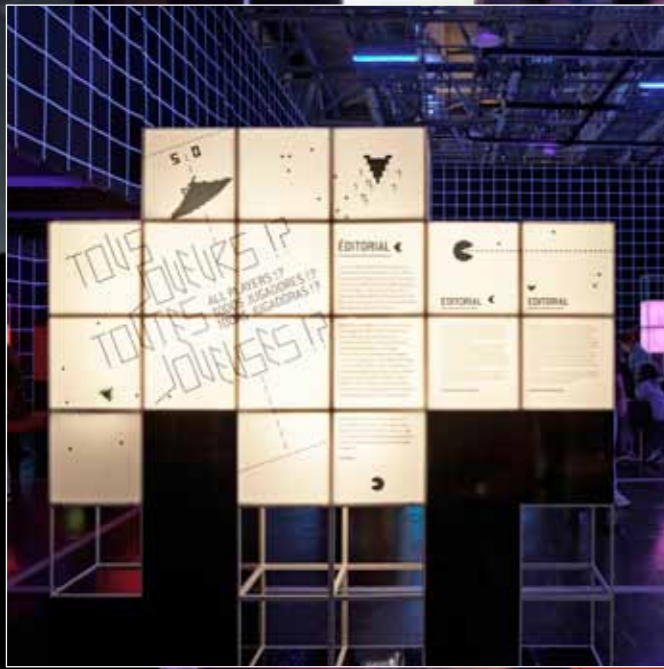
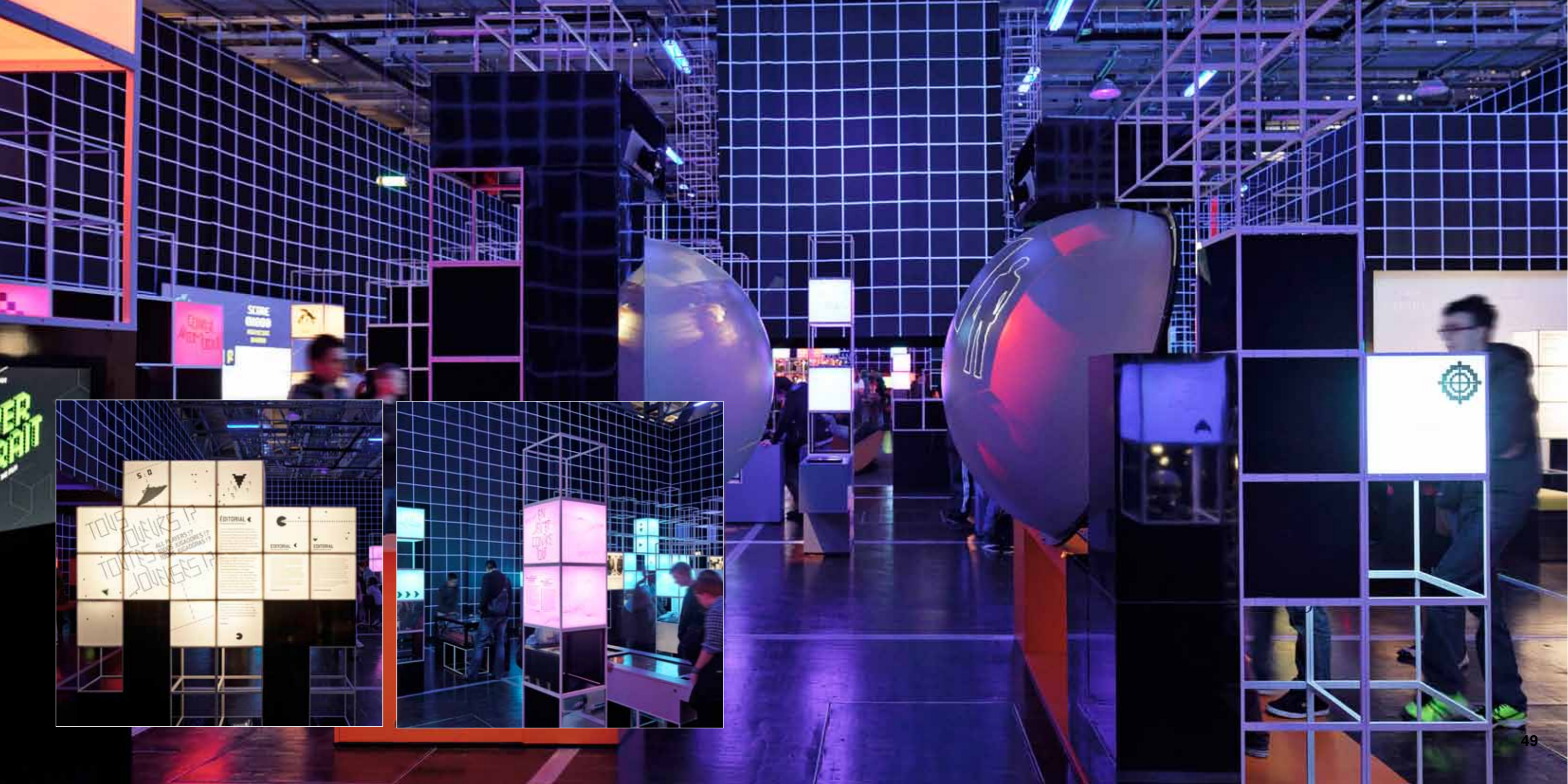




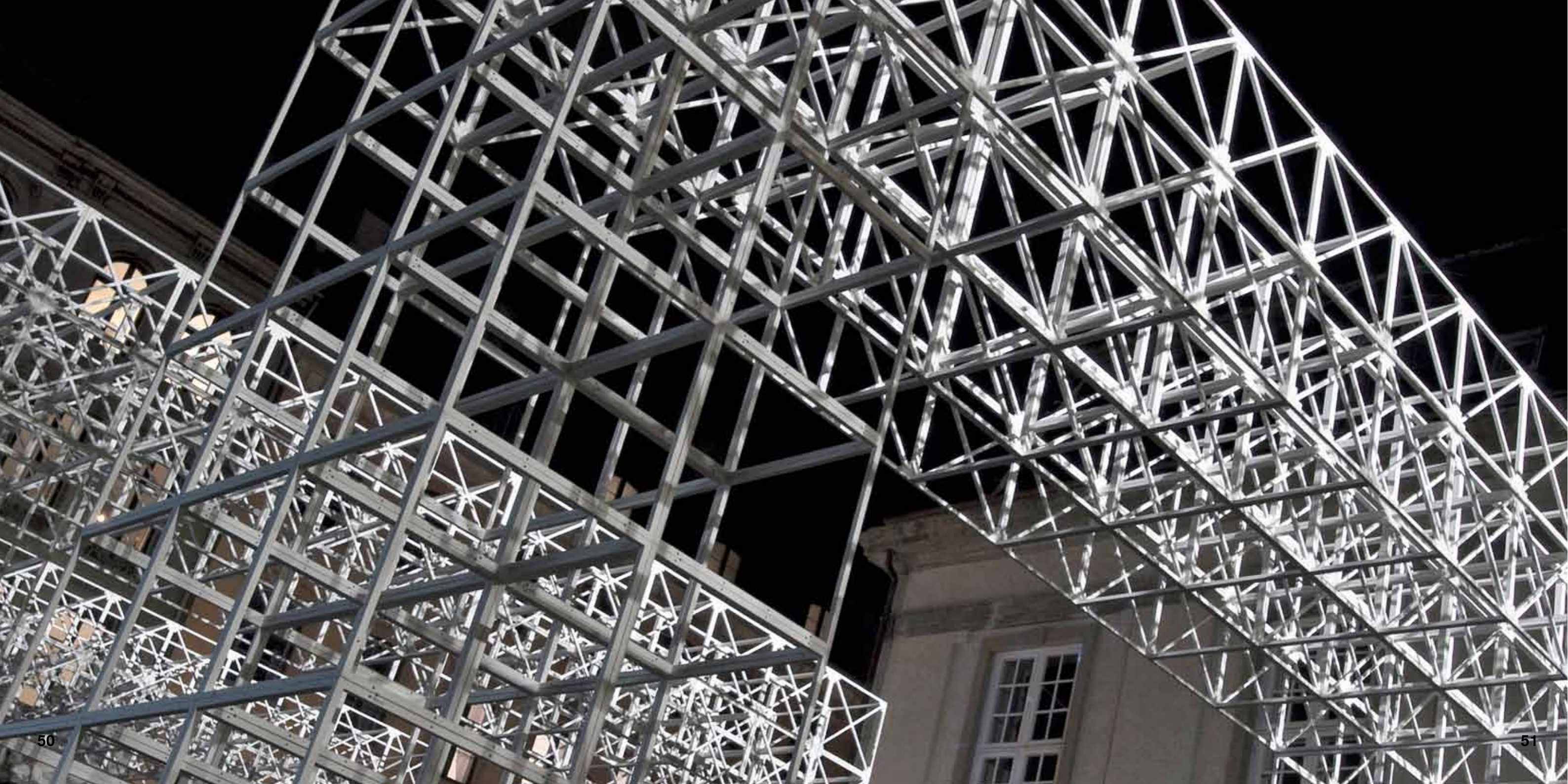
**GRID**

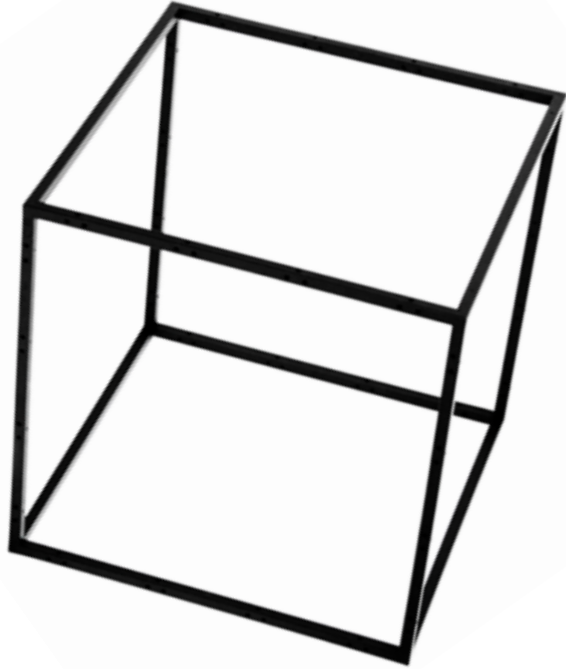












# GRID

## 40 x 40 x 40 is all you need to know

A single GRID cube measures 40 x 40 x 40 cm. That's all that counts and matters.

The frame is 12 mm nylon (PA6) with fiberglass and comes in black and white with mounting holes - one of GRID's characteristic details. Thanks to these holes, GRID is versatile and easy to work with.

The GRID system offers shelves, solid sides, transparent acrylic sides, glass, mirrors, doors and drawers as well as upholstered seats and poufs. All this makes GRID a uniquely durable, flexible and practical solution for any space.

GRID is Danish Design - made in Denmark by selected suppliers and with the environment in mind. All units are recyclable and can be melted down and remade with little environmental impact.

